

PowerAmp Design

EVALUATION KIT FOR PAD20

EVAL20

Rev B

INTRODUCTION

The EVAL20 evaluation kit provides a convenient method to become familiar with the operation of the PAD20 operational amplifier before your application circuit is committed to production. Some assembly is required since user selections are needed depending on the application. For example, a current limit resistor value needs to be selected by the user. Also, there are several PCB mounting options available.

Critical connections for power supply bypassing and compensation are pre-wired. Fold-over current limit components are not provided since each application will have different requirements. Connections are also provided for diode clamps on each power supply and the output for those applications in which significant inductive kickback may be found. Terminal strips are also provided for input and output signals and power. Sockets are also provided for the optional PAD125 Current Limit Accessory Module as well as the PAD131 Fan Controller Accessory Module.

ASSEMBLY STEPS

Please note that the #1 cause of problems for evaluation kit users is not reading and following the directions (all of them). The #2 cause of problems is poor solder joints (cold or bridging). Don't become a statistic. ✓ each step.

Refer to the Illustrated Parts List for the components mentioned in the assembly steps. Note that some heavy PCB copper planes and some heavy component leads are soldered in this kit. This may require a larger soldering iron tip and/or higher soldering iron temperatures than might normally be used. These steps are marked with an asterisk (*).

□ 1. Notice that the printed circuit board (PCB) is labeled on one side as the "DUT SIDE" and the other side as "CIRCUIT" side.

□ 2. As shown in the illustrated parts list, one or more of PAD's accessory cage jack strip CJS01 was used in the assembly of this kit. It may be advisable to use the cage jack strips in your production circuit board as well. The CJS01 cage jack sockets provide a convenient and inexpensive socket. Soldering and/or de-soldering the amplifier from the circuit board can be extremely difficult due to the high thermal conductivity of the amplifier's pins and substrate. You can find the datasheet for the CJS01 on the PAD website under the "Accessory Modules" tab.

□ 3. Refer to "Jumper Selection" below the Circuit Diagram for the EVAL20 on page 4. Install the required jumpers at the locations indicated depending on the option you have chosen. Jumpers of various lengths are included in this kit.



Assembled EVAL20 with PAD20 installed. Optional PAD131 and PAD125 also installed.

Refer to the datasheet for the PAD20 for complete information on current limit options. Jumpers for option 1 are already installed. Remove and replace the jumpers as needed for the option you have chosen.

□ 4.* Six current limiting sense resistors, R_s , are provided. Two 0.47 Ω , one 1.0 Ω and one 2.0 Ω are useful for the built-in current limit circuit. The 30m Ω and 50m Ω resistors are useful for the external PAD125 current limit circuit. There are four locations on the PCB for these resistors. The PCB ties all four of the locations in parallel. The resistors can be used individually at any location or several can be used to fine tune the final value desired. See the datasheet for the PAD20 and PAD125 to determine the best value for your application. Solder the resistor(s) from the "CIRCUIT SIDE" of the PCB.

□ 5. D3 and D5 are transient voltage suppressor diodes and are not supplied since the type (breakdown voltage) varies with the application. They are not necessary for every application. They are most commonly used in application circuits where kickback from the load may force the supply voltage above the limits of the amplifier.

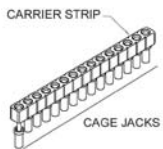
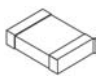
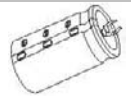

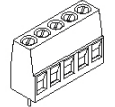







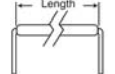


□ 6. The evaluation kit PCB can be mounted in several ways. **Option 1- Chassis mount.** Use #6 standoffs and screws (not supplied) attached to the PCB at the four corners of the PCB.

Option 2- Bench-top mount. Use the rubber bumpers supplied. These are "stick-on" components. Remove the release paper from each bumper and apply the bumper to the square outlines on the "CIRCUIT SIDE" of the PCB.

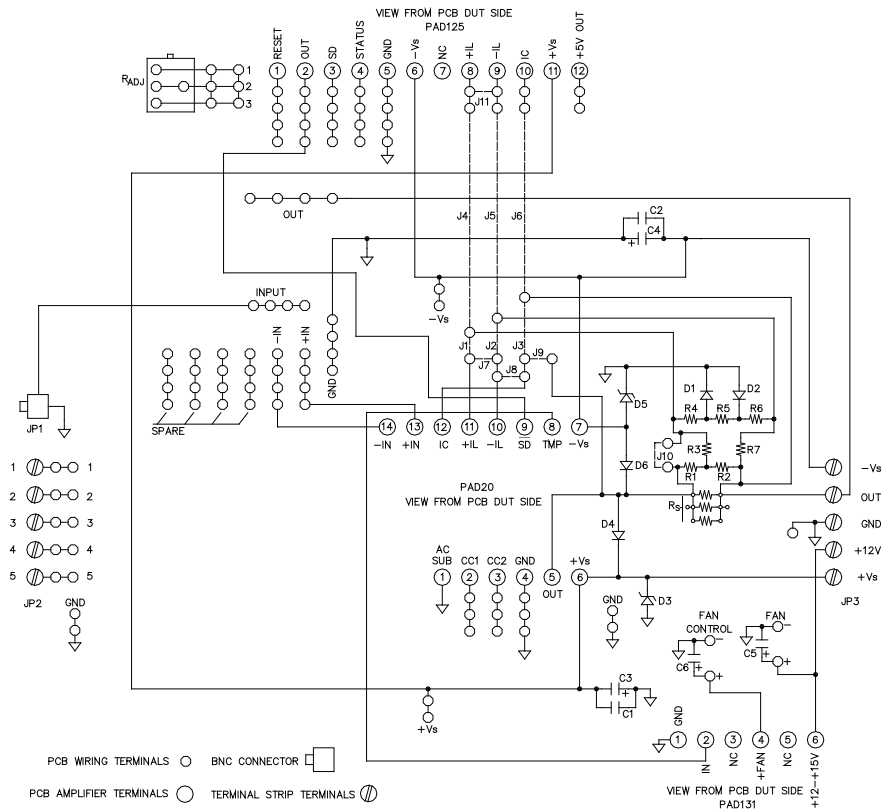
Option 3- DIN rail mount. The PCB can be mounted to a 35mm DIN rail. For mounting the PCB to a DIN rail press the adaptors into the PCB in the holes at the edges of the PCB at locations 1 and 2 from the "CIRCUIT SIDE" of the PCB. Make sure that the plastic tines have fully spread out on the "DUT SIDE" of the PCB.

- 7. Components for locations R1-R7, D1, D2 are for the optional fold-over current limiting and are not supplied. Refer to the datasheet of the amplifier model to find out how to apply circuits that require these components.
- 8. Remove the 4 hex nuts from the mounting spacers of the amplifier.
- 9. Align the 4 studs of the mounting spacers with the mounting holes in the PCB. Be sure that the amplifier's pin 1 aligns with pin 1 on the PCB. Slowly lower the amplifier into the PCB, making sure that the pins of the amplifier and the cage jacks mate. Push the amplifier into the PCB until the mounting spacers meet the PCB.
- 10. Fasten the amplifier to the PCB with the 4 hex nuts previously removed. Do not over-tighten the nuts as this may strip the mounting studs. The provided plastic nut starter can assist you here.
- 11. If necessary, strip 1/8" of insulation from the wires connected to the fan. Twist and tin the wire ends. Insert the red wire into the cage jack labeled "+" and the black or blue wire into the jack marked "-" at the location marked "FAN". Or, if you plan to use the PAD131 Fan Controller Accessory Module, insert the fan wires similarly into the "+" and "-" cage jacks at the location marked "Fan Control". Do not solder the fan wires into the PCB.
- 12. Use the bread-boarding area to add the external components necessary to program the amplifier gain and other circuit requirements to evaluate your application circuit. You can use the evaluation kit schematic and PCB views to map out your circuit.
- 13. Remember that the amplifier must be compensated to operate correctly. See the amplifier datasheet on Page 4, under PHASE COMPENSATION. The selected phase compensation capacitor will be installed at "C_C" on the evaluation kit PCB. A 470pF capacitor has already been installed in your kit. Another value may better suit your application. Remove and replace the capacitor as necessary for your application. 47pF, 68pF and 220pF capacitors are also included with the kit. C_C must be rated for at least 200V. A temperature stable type capacitor is required—an X7R ceramic, for example, or NPO (COG) type.
- 14. If you have chosen to use the PAD125 Current Limit Accessory module and/or the PAD131 Fan Controller Accessory Module install them at this time making sure that pin 1 on each module is aligned with the pin 1 marking on the PCB. Note that the PCB location for the PAD125 may be marked as PAD123 as the PAD125 replaces the PAD123. Additional programming of the PAD125 will be necessary. See the PAD125 datasheet for full details.
- 15. The evaluation kit assembly is complete. Be sure you have read and followed all the assembly steps. Do not forget any jumpers that need to be installed. Inspect the circuit board for solder shorts or poor solder joints. An illuminated magnifier is helpful.
- 16. Before applying power to your circuit set the power supply for $\pm 20V$ and set the power supply current limit to approximately 100mA. Use little or no load at first. Apply an input signal and check the output with an oscilloscope to verify proper functionality. This step can prevent damaging the amplifier or the circuit board should there be some mistake in assembly.

Note that the PAD20, PAD125, PAD131 are purchased separately.

✓	Ref	Qty	Description	Mfg/Distributor	Mfg. Part Number	Illustration (not to scale)
<input type="checkbox"/>	Amplifier Pins 1-22 + TPs	1	Cage Jacks w/carrier strip 32 wide	Power Amp Design	CJS01	
<input type="checkbox"/>	C1,2	2	Chip Capacitor, 1 μ F	Novacap	1825B105K201N	
<input type="checkbox"/>	C3,4	2	Electrolytic Capacitor, 150 μ F, 200V	Panasonic/Digi-Key	ECOS2DP151BA	
<input type="checkbox"/>	JP1	1	BNC Jack	AMP/Digi-Key	5221123-2	
<input type="checkbox"/>	JP2,3	2	Terminal Block	Phoenix/Digi-Key	1729157	
<input type="checkbox"/>	Cc	1	Capacitor, 470pF 200V	AVX/Mouser	CK05BX471KTR1	
<input type="checkbox"/>	Cc	1	Capacitor, 220pF 200V	AVX/Mouser	CK05BX221KTR1	
<input type="checkbox"/>	Cc	1	Capacitor, 68pF 200V	Cornell Dubilier/Mouser	CK05BX680K	
<input type="checkbox"/>	Cc	1	Capacitor, 47pF 200V	Cornell Dubilier/Mouser	CK05BX470K	
<input type="checkbox"/>	R _s	6	Sense Resistor	Xicon/Mouser Xicon/Mouser Xicon/Mouser Vishay/Mouser Vishay/Mouser	(2) 262-0.47-RC (0.47 Ω) 262-1.0-RC (1.0 Ω) 262-2.0-RC (2.0 Ω) LVR01R0300FB12 (30m Ω) LVR01R0500FB12 (50m Ω)	
<input type="checkbox"/>	D4, 6	2	Diode, Fast Recovery	ON Semi/Digi-Key	MUR460RL	
<input type="checkbox"/>	NA	5	Rubber Bumper	3M/Digi-Key	SJ5518	
<input type="checkbox"/>	NA	15 (5ea)	Jumper	3M/Mouser	923345-01-C (0.1 in) 923345-02-C (0.2 in) 923345-03-C (0.3 in)	
<input type="checkbox"/>	NA	1	Nut Starter	Menda/Jensen Tool	200	
<input type="checkbox"/>	NA	2	35mm DIN Rail Adaptor	Scidyne	121-0014	
<input type="checkbox"/>	NA	1	PCB	Power Amp Design	EVAL20	NA

CIRCUIT DIAGRAM



JUMPER SELECTION

Option 1: To use the PAD20 alone **without** fold-over current limit insert jumpers J1, 3, 7, 10 only (**jumpers pre-installed for this option**).

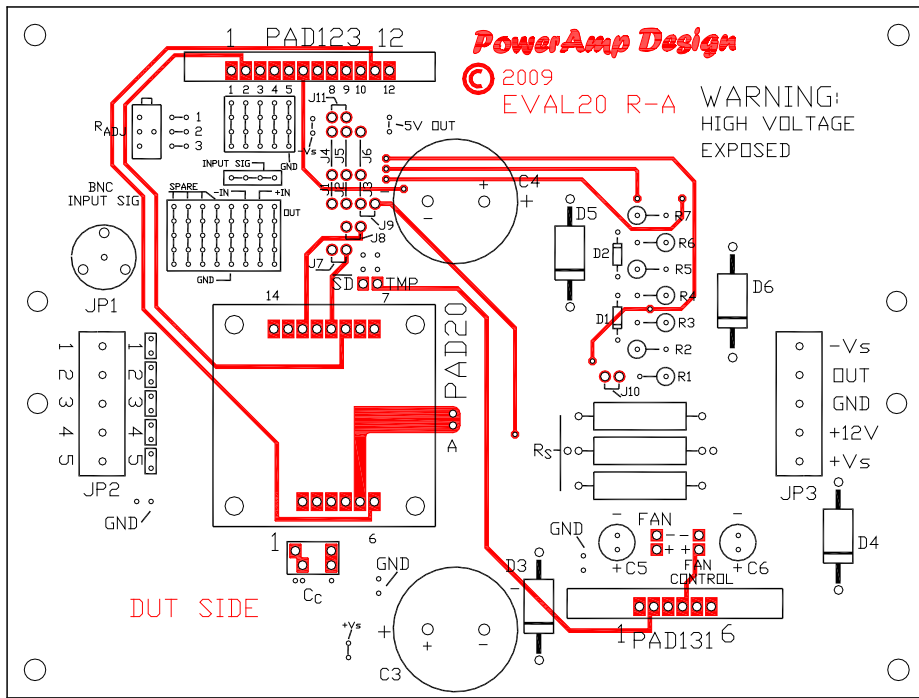
Option 2: To use the PAD20 alone **with** fold-over current limit use jumpers J1, 2, 3 only.

Option 3: To use the PAD20 and PAD125 together **without** fold-over current limit insert jumpers J4, 6, 7, 8, 9, 10, 11 only.

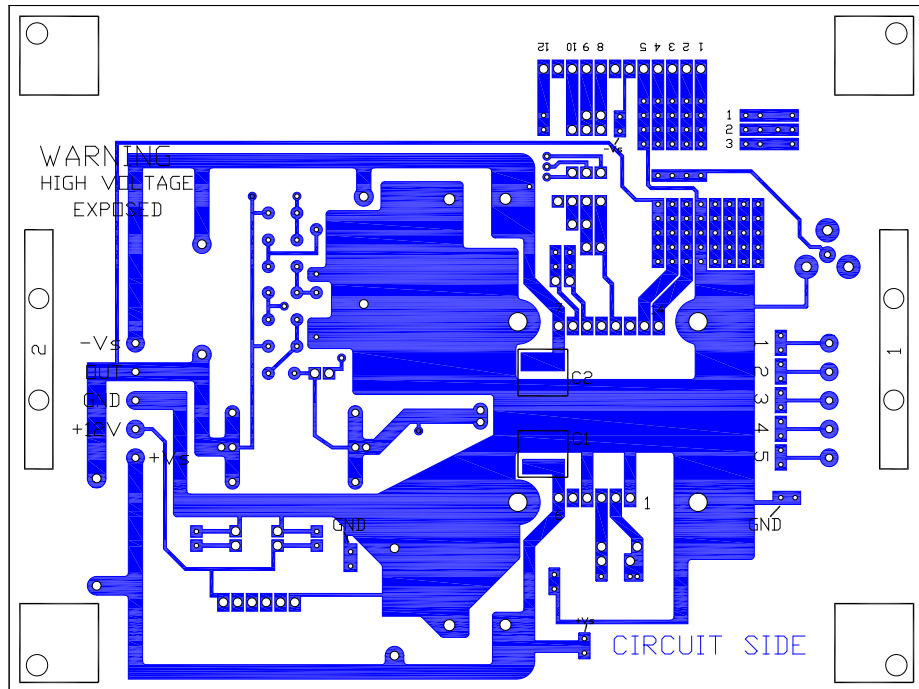
Option 4: To use the PAD20 and PAD125 together **with** fold-over current limit insert jumpers J4, 5, 6, 7, 8, 9 only.

Refer to the **PAD Power™** Excel spreadsheet (available for download from the website) for assistance in calculating resistor values for fold-over current limiting.

TOP VIEW

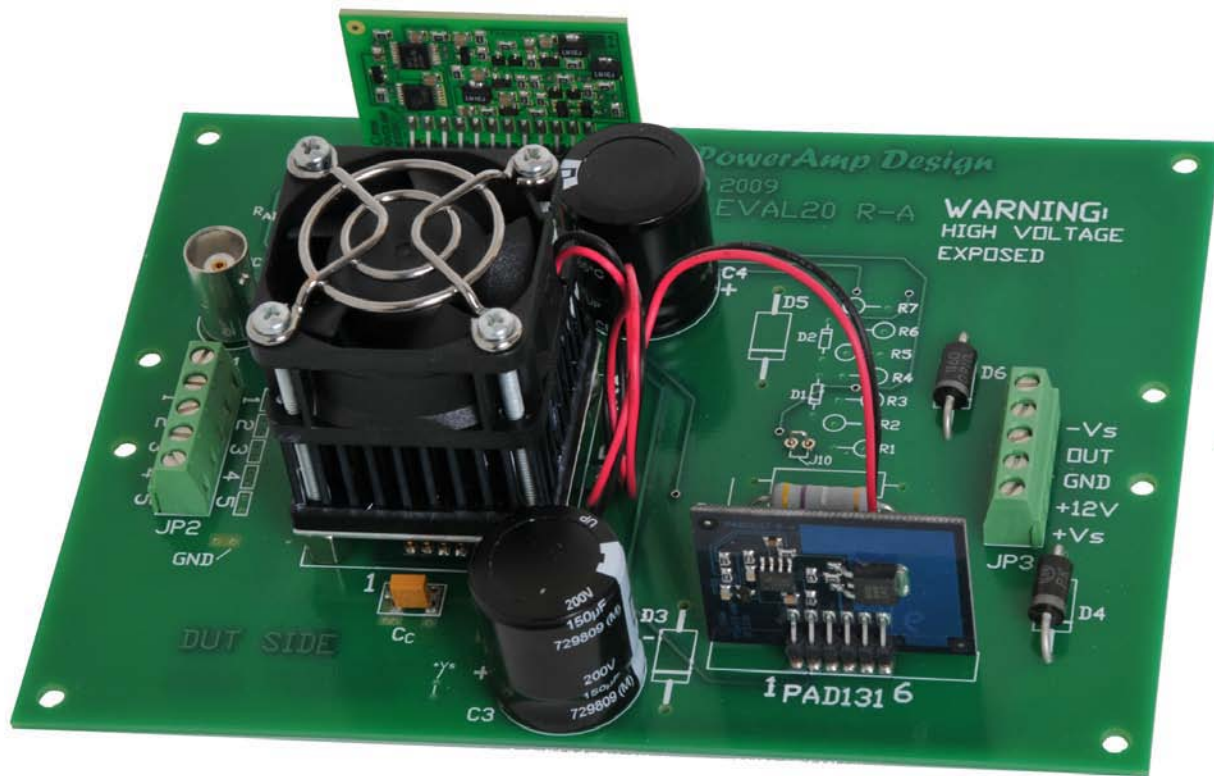


BOTTOM VIEW



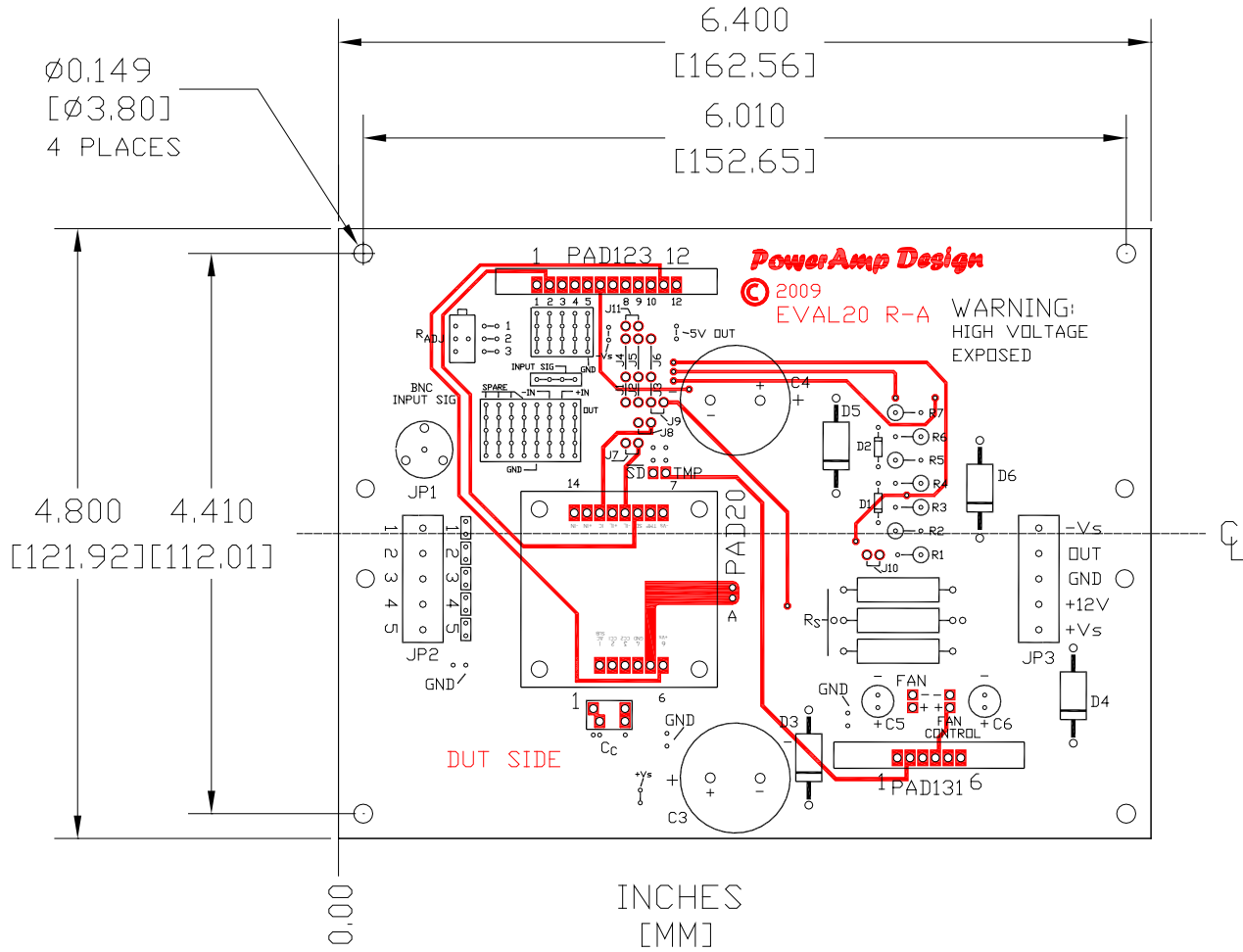
PowerAmp Design ♦ EVAL20 ♦ EVALUATION KIT FOR MODEL PAD20

ASSEMBLED EVAL20 WITH OPTIONAL PAD131 AND PAD125 MODULES



PowerAmp Design ♦ EVAL20 ♦ EVALUATION KIT FOR PAD20

BOARD OUTLINE DIMENSIONS



PowerAmp Design ♦ EVAL20 ♦ EVALUATION KIT FOR PAD20